



Office of General Services

DESIGN & CONSTRUCTION GROUP
THE GOVERNOR NELSON A. ROCKEFELLER
EMPIRE STATE PLAZA
ALBANY, NY 12242

ADDENDUM NO. 3 TO PROJECT NO. 47725

CONSTRUCTION WORK
PROVIDE SNOW SHIELD FEATURES
EMPIRE STATE PLAZA
EAST PARKING GARAGE
PHILLIP STREET
ALBANY, NY

July 3, 2025

<p>NOTE: This Addendum forms a part of the Contract Documents. Insert it in the Project Manual. Acknowledge receipt of this Addendum in the space provided on the Bid Form.</p>
--

CONSTRUCTION WORK DRAWINGS

1. Revised Drawings:
 - a. Drawing Nos. A-201, A-202, A-302, A-403, A-501, A-502, and A-601 all noted "Revised Drawing 2025-07-01", accompany this Addendum and supersede the same numbered originally issued drawings.

END OF ADDENDUM

Brady M. Sherlock, P.E.
Director, Division of Design
Design & Construction

CONSULTANT

CERTIFICATE OF AUTHORIZATION No.: 0022677



ENERGY CODE COMPLIANCE STATEMENT:

TO THE BEST OF THE REGISTERED DESIGN PROFESSIONAL'S
KNOWLEDGE, BELIEF AND PROFESSIONAL JUDGEMENT,
THESE PLANS AND/OR SPECIFICATIONS ARE IN COMPLIANCE
WITH THE 2020 ENERGY CODE OF NEW YORK STATE.

UNIFORM CODE COMPLIANCE STATEMENT:

TO THE BEST OF THE REGISTERED DESIGN PROFESSIONAL'S
KNOWLEDGE, BELIEF AND PROFESSIONAL JUDGEMENT,
THESE PLANS AND/OR SPECIFICATIONS ARE IN COMPLIANCE
WITH THE 2020 UNIFORM CODE OF NEW YORK STATE.

WARNING:

THE ALTERATION OF THIS MATERIAL IN ANY WAY, UNLESS DONE UNDER THE DIRECTION OF A COMPARABLE PROFESSIONAL, I.E. ARCHITECT FOR AN ARCHITECT, ENGINEER FOR AN ENGINEER OR LANDSCAPE ARCHITECT FOR A LANDSCAPE ARCHITECT, IS A VIOLATION OF THE NEW YORK STATE EDUCATION LAW AND/OR REGULATIONS AND IS A CLASS 'A' MISDEMEANOR.



CONTRACT

CONSTRUCTION

TITLE:

PROVIDE SNOW SHIELD FEATURES


LOCATION:

EMPIRE STATE PLAZA
EAST PARKING GARAGE
PHILIP STREET
ALBANY, NY

CLIENT:

OFFICE OF GENERAL SERVICES

REVISÉD DRAWING 2025-07-01

	2025-07-01	ADDENDUM 3
	2025-04-22	BID DOCUMENT

PROJECT NUMBER:	47725 - C
-----------------	-----------

DESIGNED BY

FIELD CHECK

SHEET TITLE

FOURTH FLOOR SNOW SHIELD INTERIOR ELEVATIONS

DRAWING NUMBER:

A-202

SHEET 12 OF 21



REF: 1 / A-104

SCALE: 1/8" = 1'-0"



REF: 1 / A-104

SCALE: 1/8" = 1'-0"



REF: 1 / A-104

SCALE: 1/8" = 1'-0"



REF: 1 / A-104

SCALE: 1/8" = 1'-0"

1

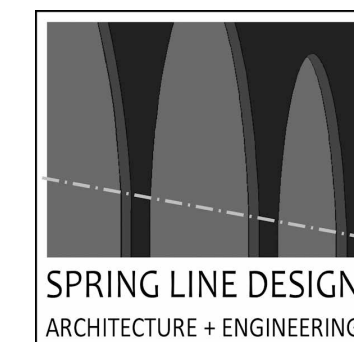
LEGEND:

SNOW SHIELD TYPE IDENTIFIER:

Diagram illustrating the components of a snow shield label: 1W A1-A2 L.

- SNOW SHIELD TYPE**: Points to the label itself.
- FLOOR LEVEL**: Points to the '1W' section.
- NORTH (N), EAST (E) OR WEST (W)**: Points to the 'A1-A2' section.
- LEFT (L), RIGHT (R) OR MIDDLE (M) OPENING (FROM THE EXTERIOR)**: Points to the 'L' section.
- WALL OPENING LOCATION BY GRID LINE LABELS**: Points to the label itself.

 SNOW SHIELD



ENERGY CODE COMPLIANCE STATEMENT:

TO THE BEST OF THE REGISTERED DESIGN PROFESSIONAL'S
KNOWLEDGE, BELIEF AND PROFESSIONAL JUDGEMENT,
THESE PLANS AND/OR SPECIFICATIONS ARE IN COMPLIANCE
WITH THE 2020 ENERGY CODE OF NEW YORK STATE.

UNIFORM CODE COMPLIANCE STATEMENT:

TO THE BEST OF THE REGISTERED DESIGN PROFESSIONAL'S
KNOWLEDGE, BELIEF AND PROFESSIONAL JUDGEMENT,
THESE PLANS AND/OR SPECIFICATIONS ARE IN COMPLIANCE
WITH THE 2020 UNIFORM CODE OF NEW YORK STATE.

WARNING:

THE ALTERATION OF THIS MATERIAL IN ANY WAY, UNLESS DONE UNDER THE DIRECTION OF A COMPARABLE PROFESSIONAL, I.E. ARCHITECT FOR AN ARCHITECT, ENGINEER FOR AN ENGINEER OR LANDSCAPE ARCHITECT FOR A LANDSCAPE ARCHITECT, IS A VIOLATION OF THE NEW YORK STATE EDUCATION LAW AND/OR REGULATIONS AND IS A CLASS 'A' MISDEMEANOR.



REGISTRATION EXPIRES
12/31/2026

CONTRACT

CONSTRUCTION

TITLE

PROVIDE SNOW SHIELD FEATURES

LOCATION: EMPIRE STATE PLAZA
EAST PARKING GARAGE
PHILIP STREET
ALBANY, NY

CLIENT: OFFICE OF GENERAL SERVICES

REVISED DRAWING 2025-07-01

[illegible]

PROJECT NUMBER:	47725 - C
-----------------	-----------

DESIGNED BY:	KK
--------------	----

DRAWN BY:	SS
-----------	----

FIELD CHECK

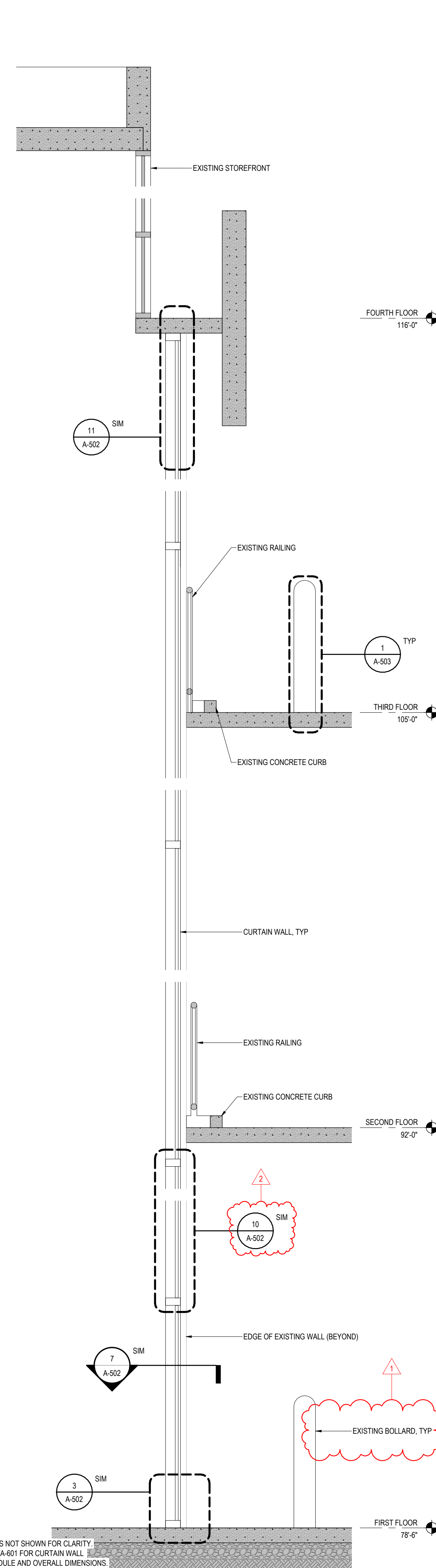
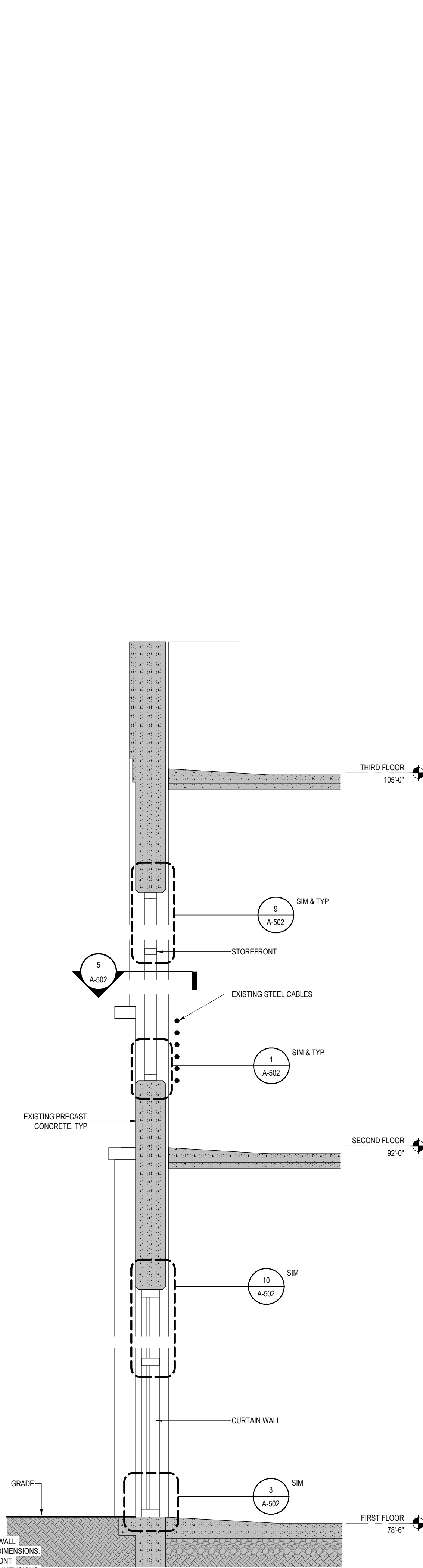
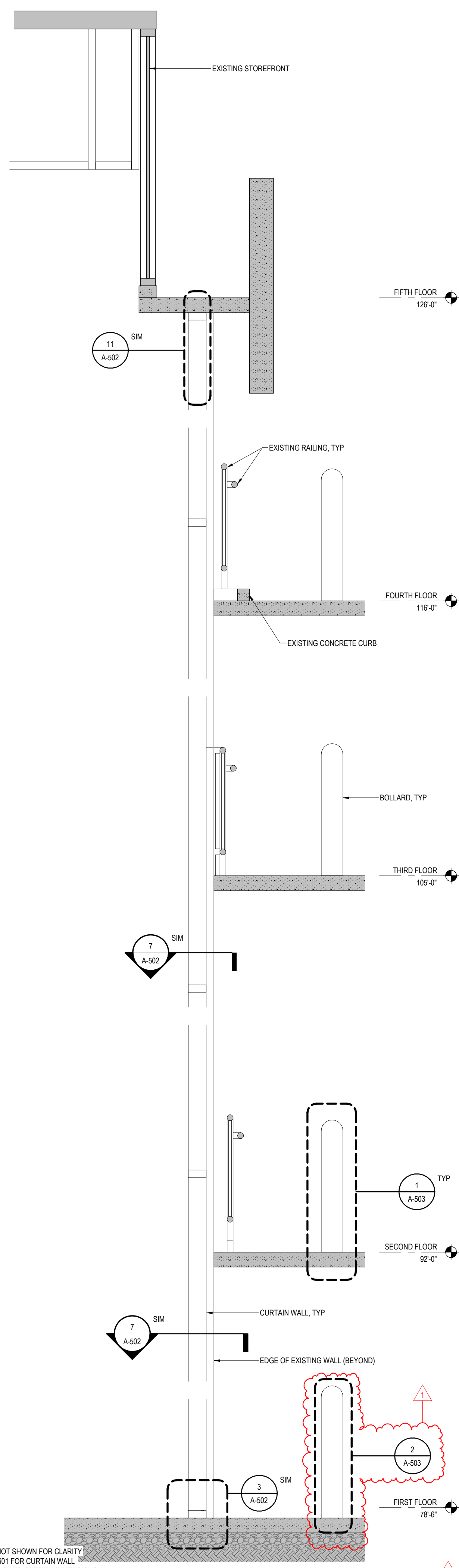
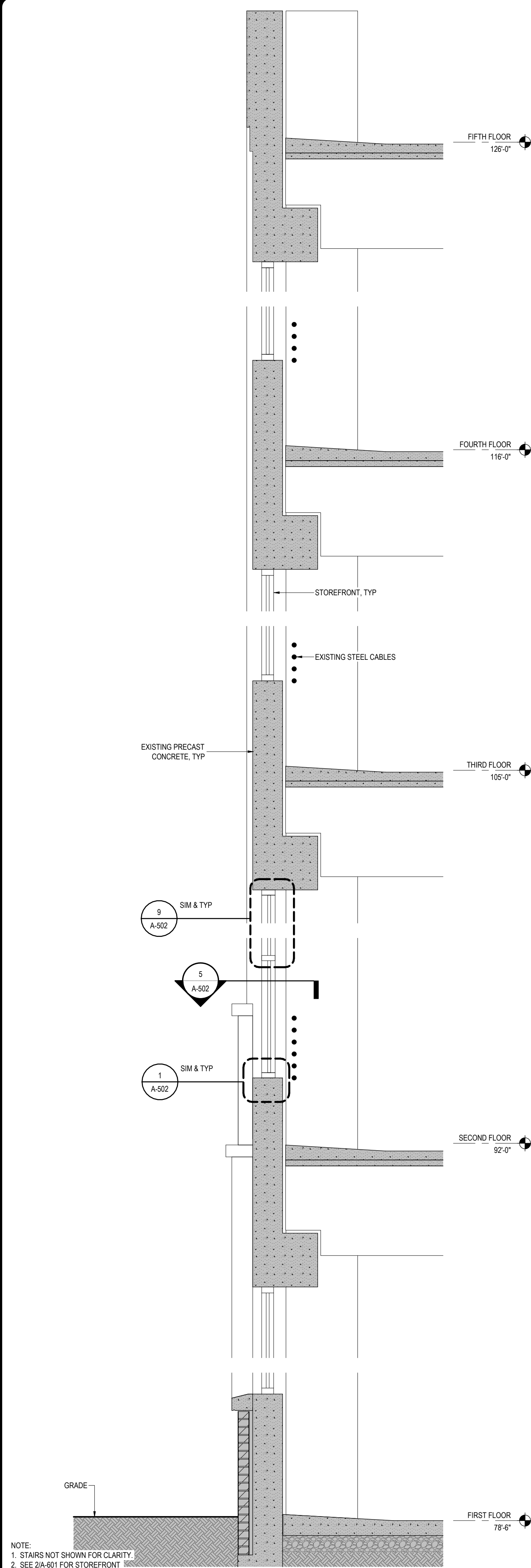
SHEET TITLE

WALL SECTIONS

DRAWING NUMBER:

A-302

SHEET 14 OF 21



1	STAIR 5 STOREFRONT
---	--------------------

REF: 1 / A-401 SCALE: 1/2" = 1'-0"

2	STAIR 5 CURTAIN WALL
---	----------------------

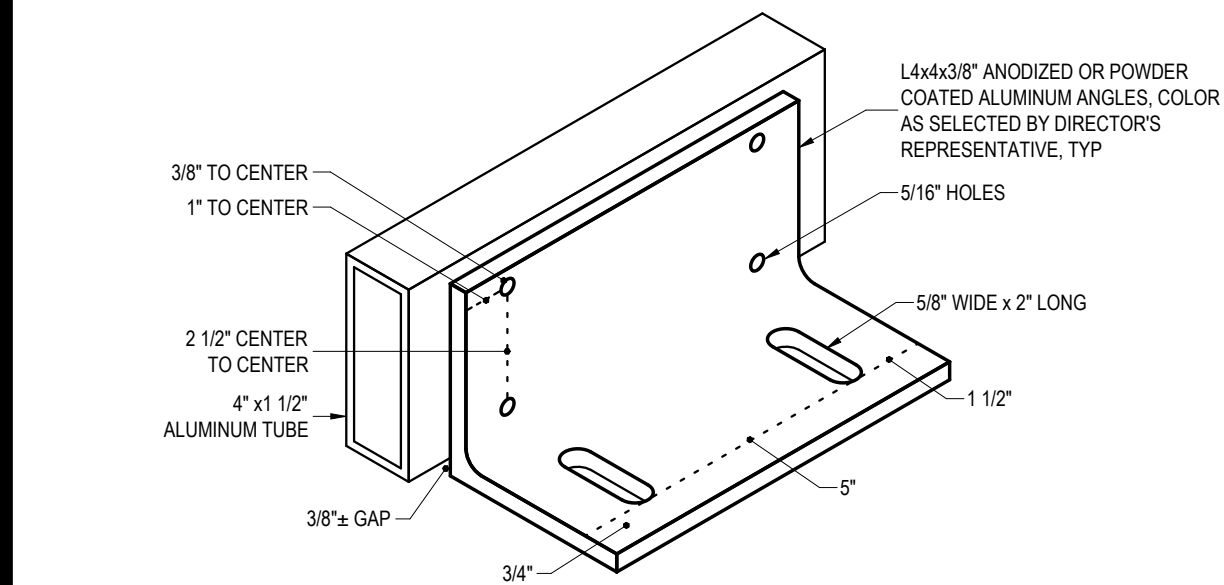
REF: 1 / A-401 SCALE: 1/2" = 1'-0"

3	STAIR 8 STOREFRONT AND CURTAIN WALL
---	-------------------------------------

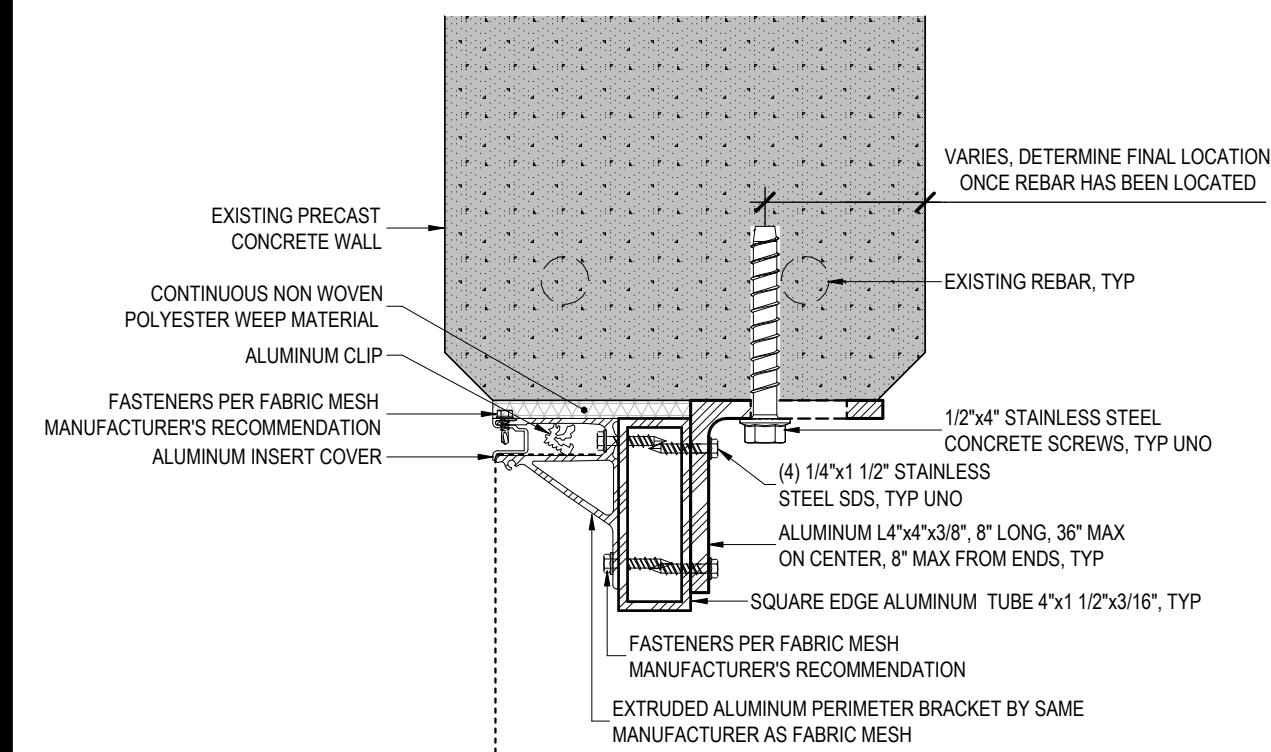
SCALE: 1/2" = 1'-0"

4	STAIR 6 CURTAIN WALL
---	----------------------

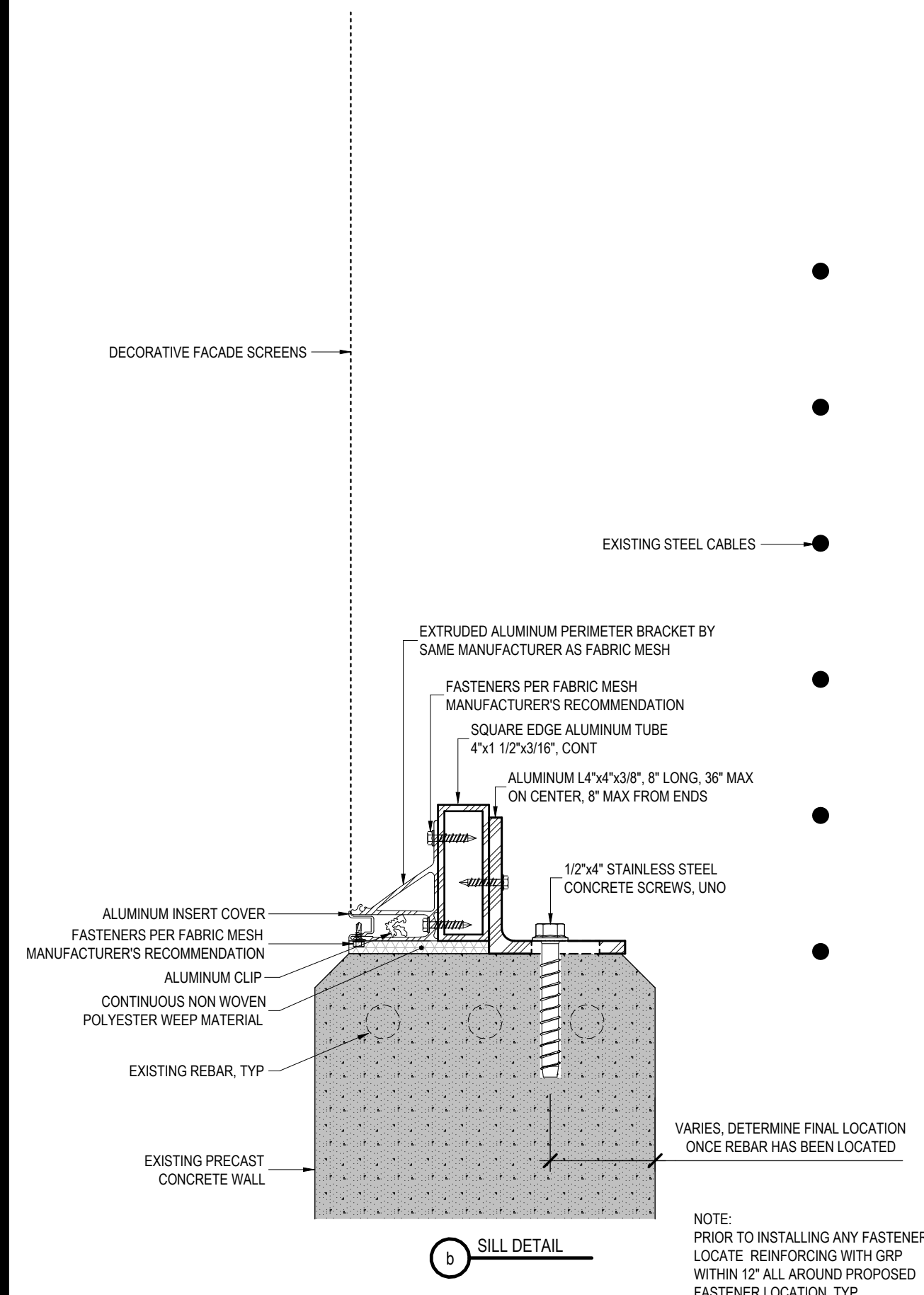
REF: 1 / A-402 SCALE: 1/2" = 1'-0"



7 ALUMINUM ANGLE AND TUBE DETAIL (ISOMETRIC)
REF: SCALE: 3" = 1'-0"

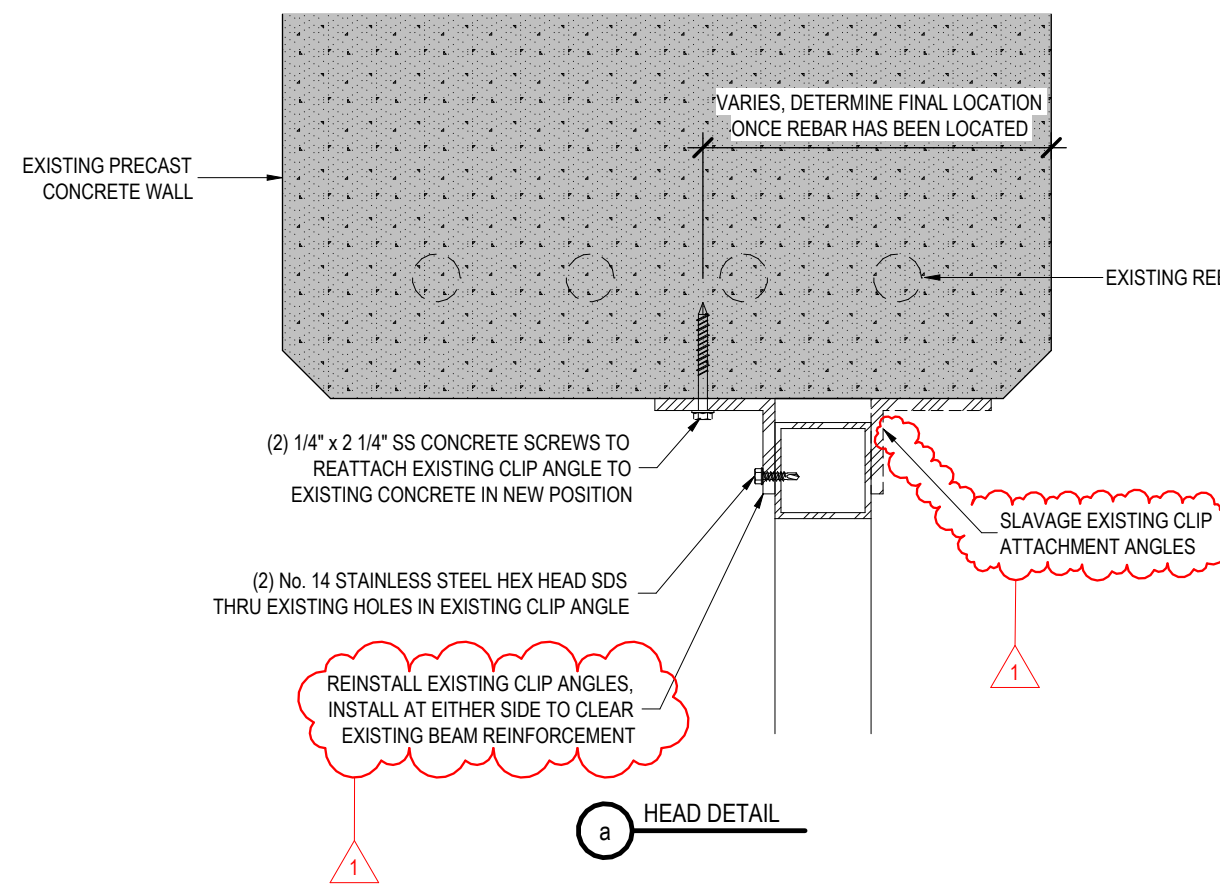


a HEAD DETAIL

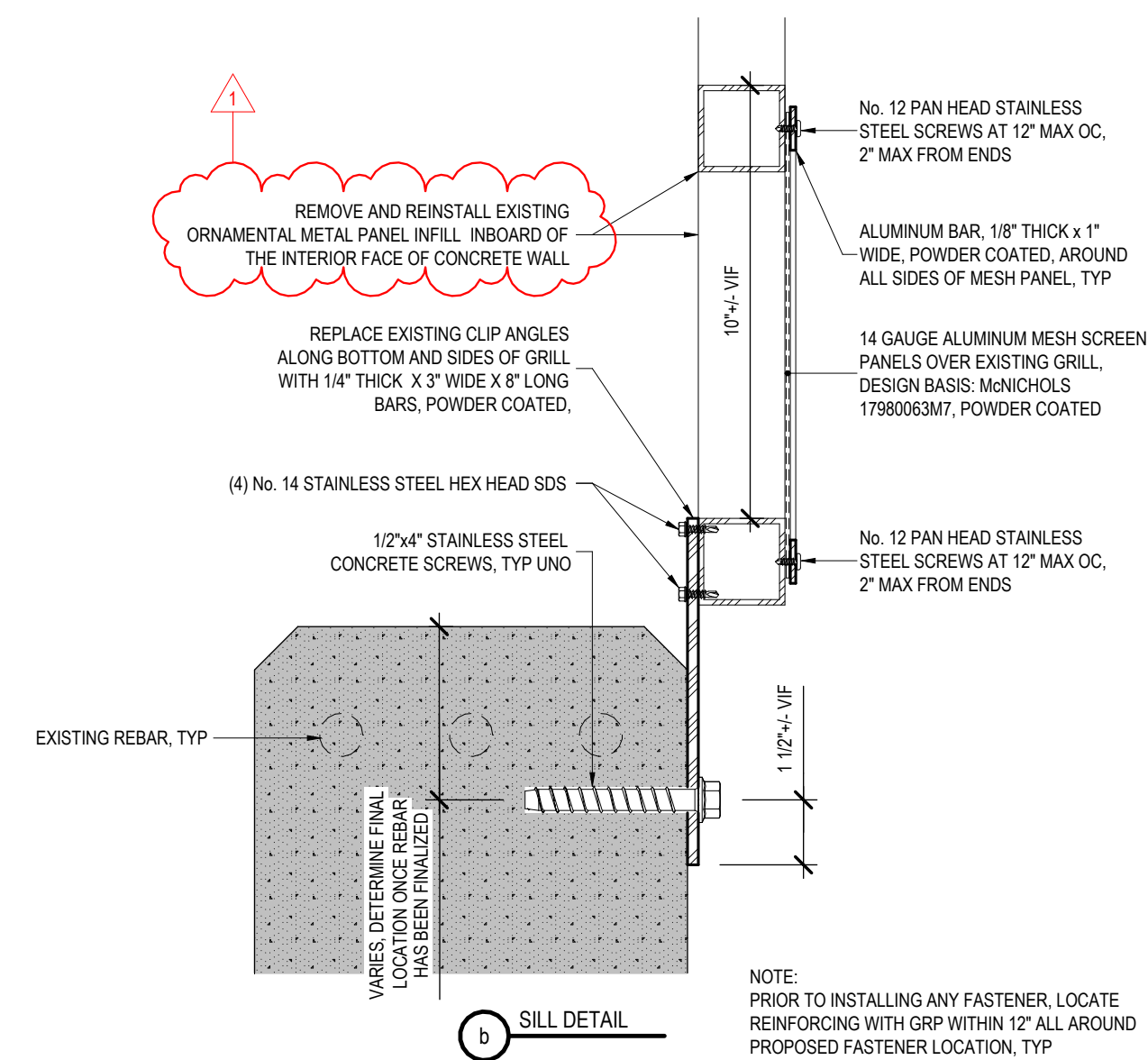


b SILL DETAIL

1 TYPICAL SNOW SHIELD DETAIL
REF: 1/A-301 SCALE: 3" = 1'-0"

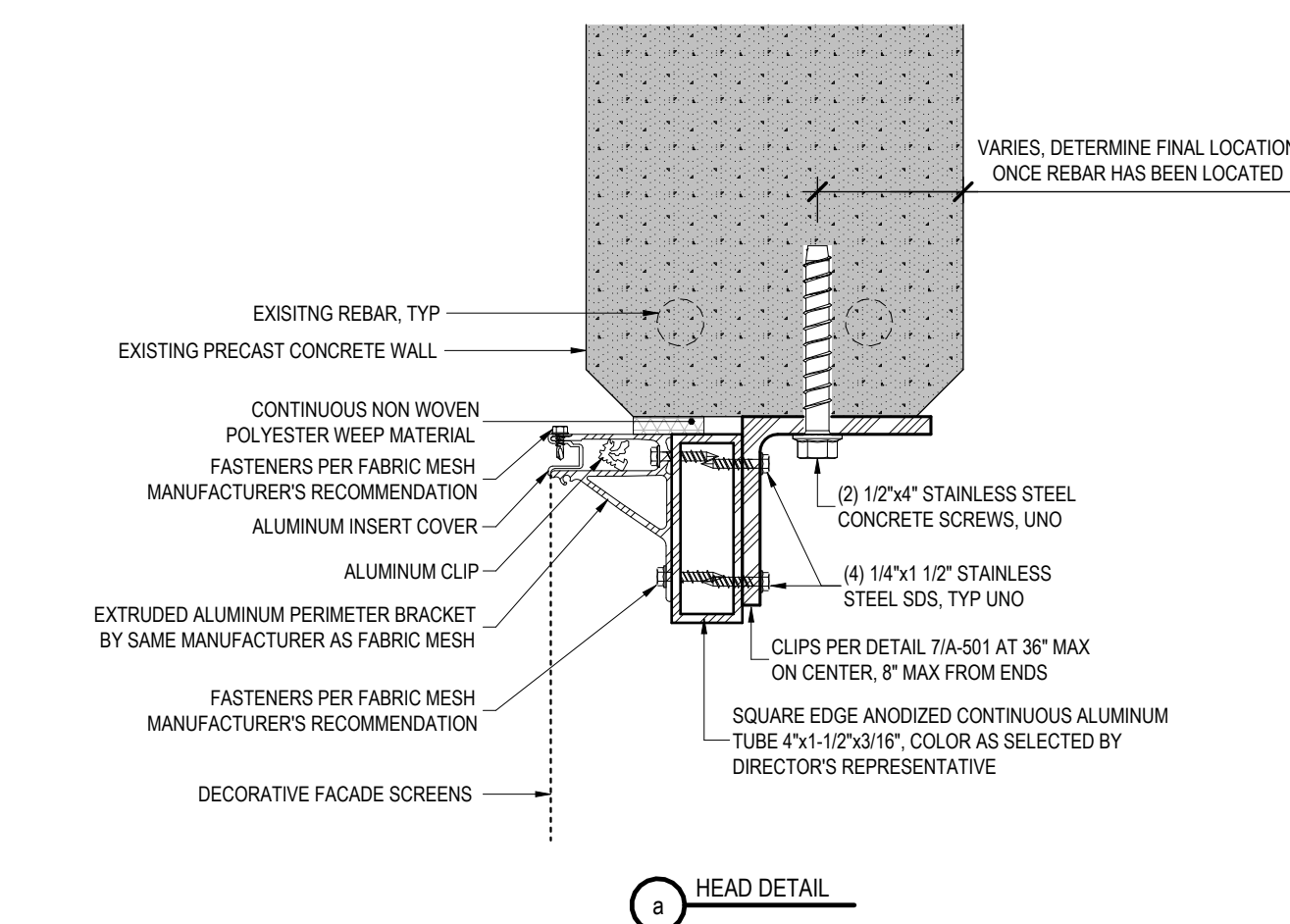


a HEAD DETAIL

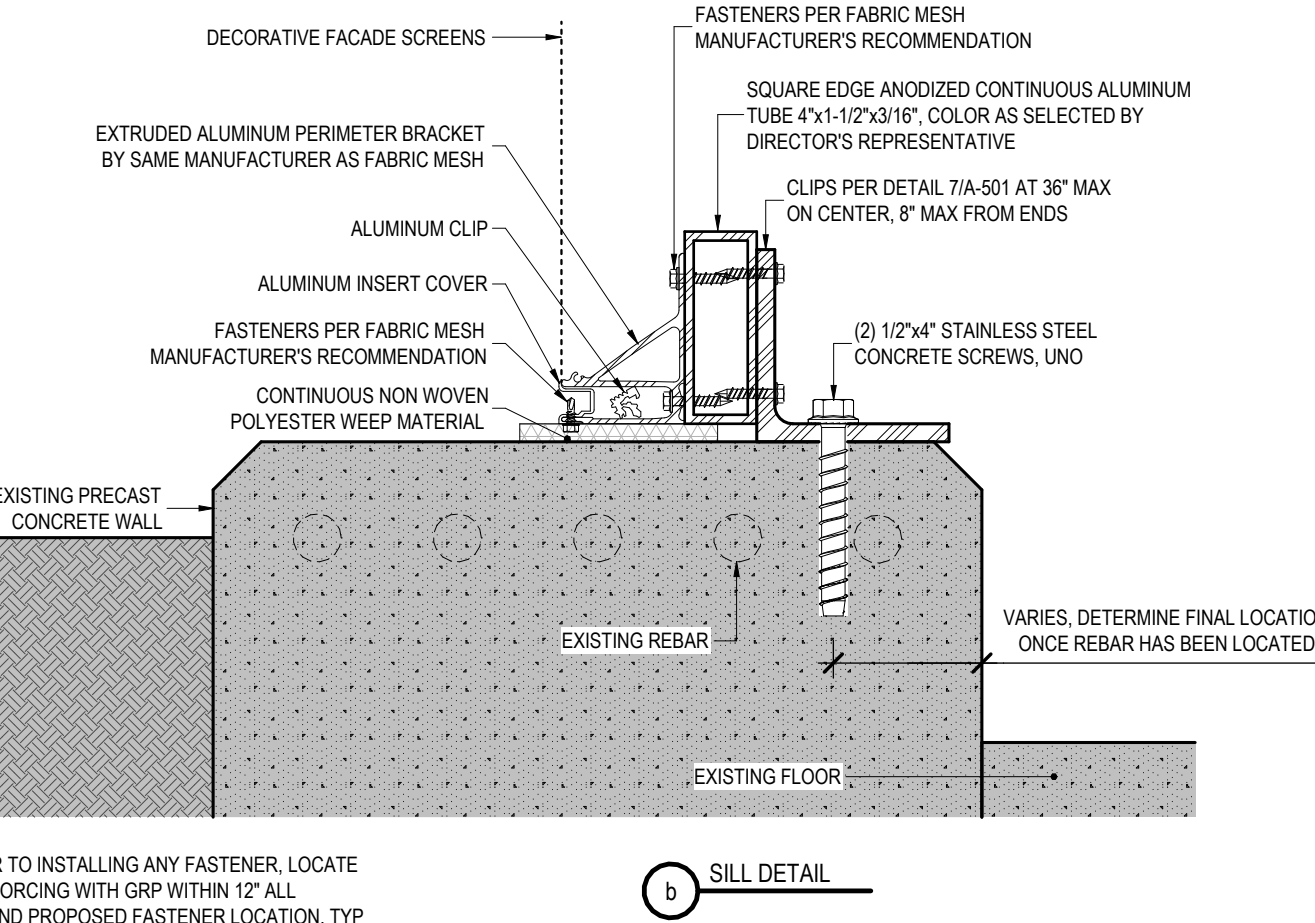


b SILL DETAIL

5 ORNAMENTAL METAL INFILL PANEL REINSTALLATION
REF: 4/A-201 SCALE: 3" = 1'-0"

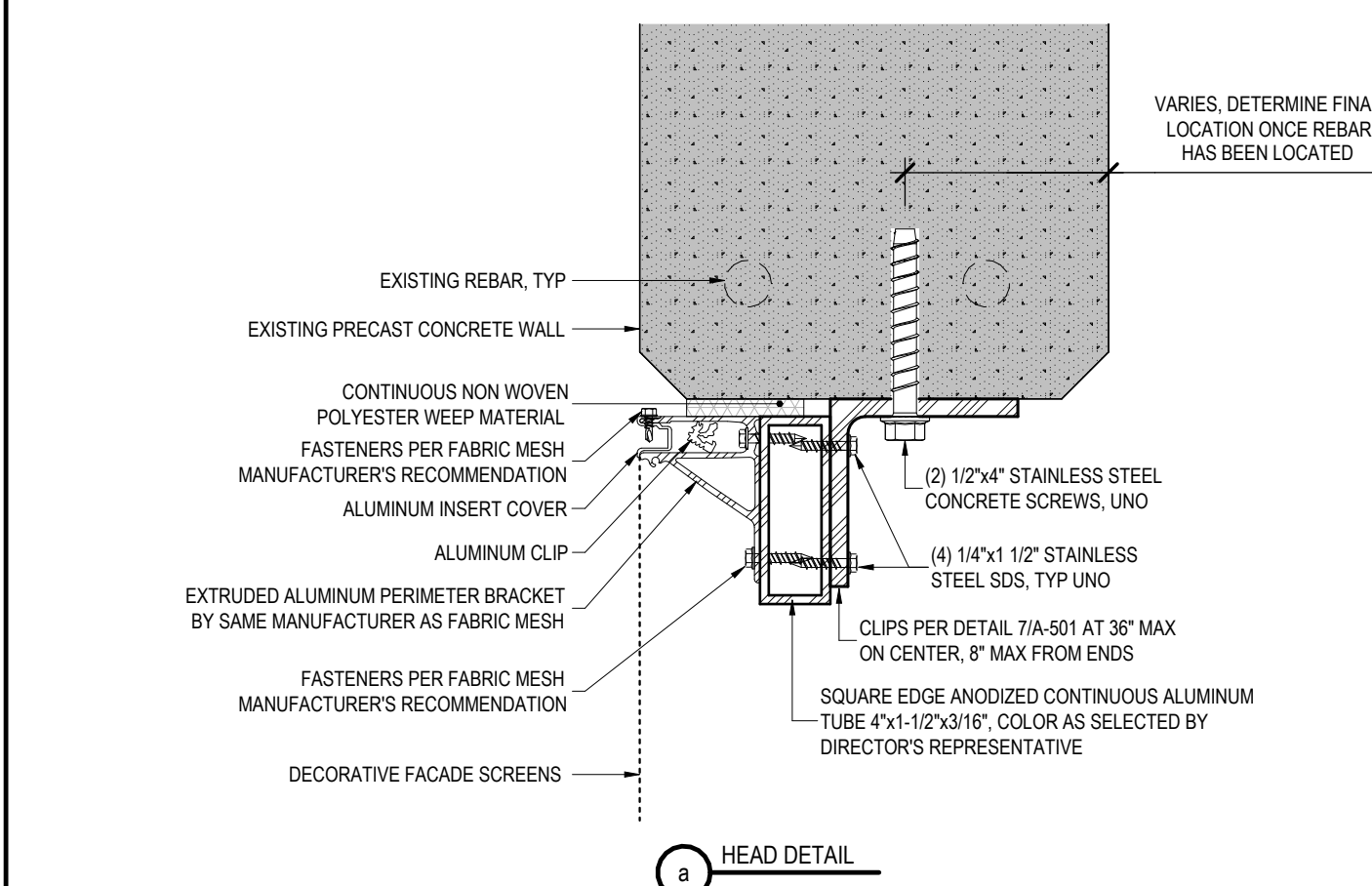


a HEAD DETAIL

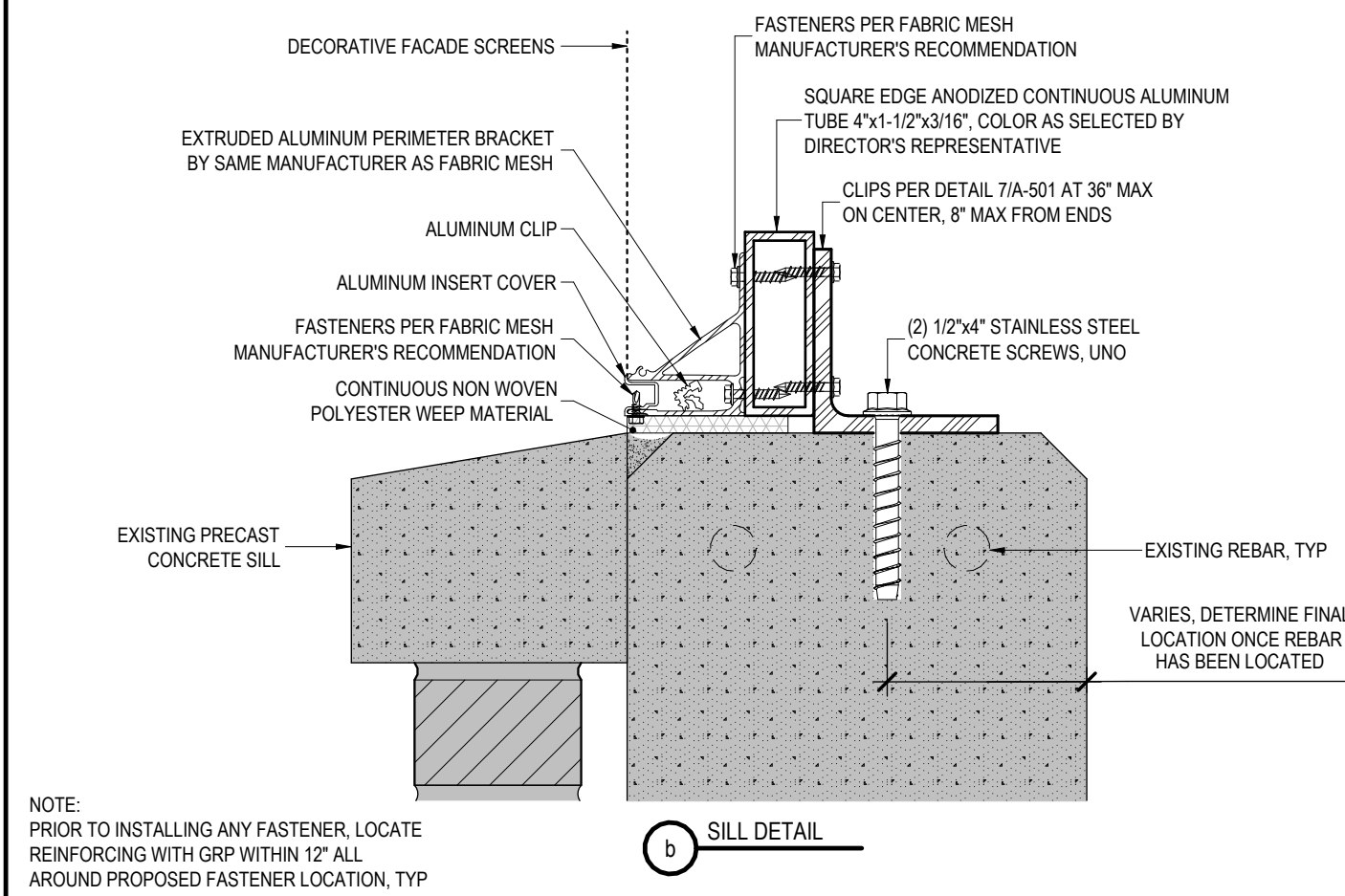


b SILL DETAIL

2 FIRST FLOOR (NORTH) SNOW SHIELD DETAIL
REF: 2/A-301 SCALE: 3" = 1'-0"

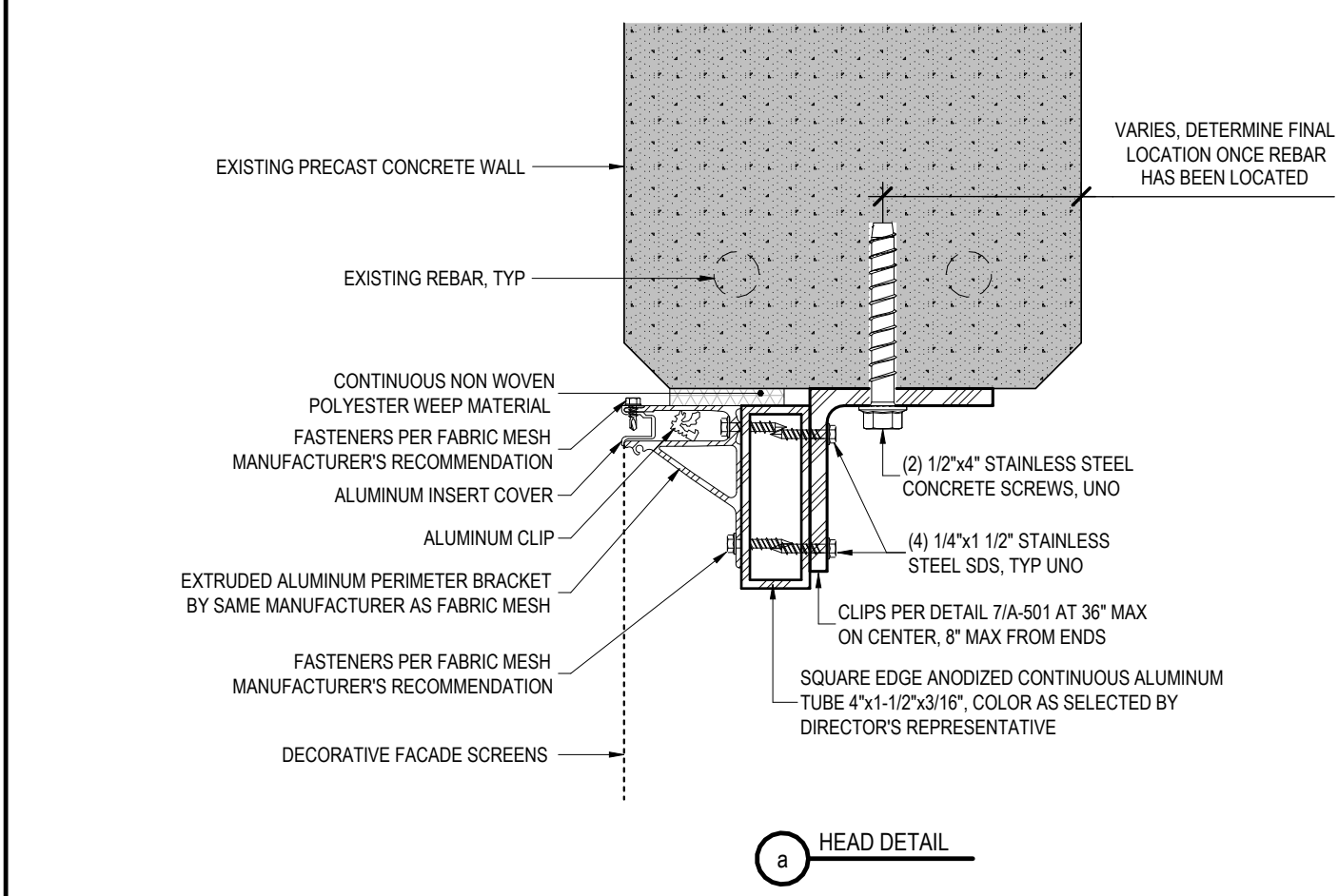


a HEAD DETAIL

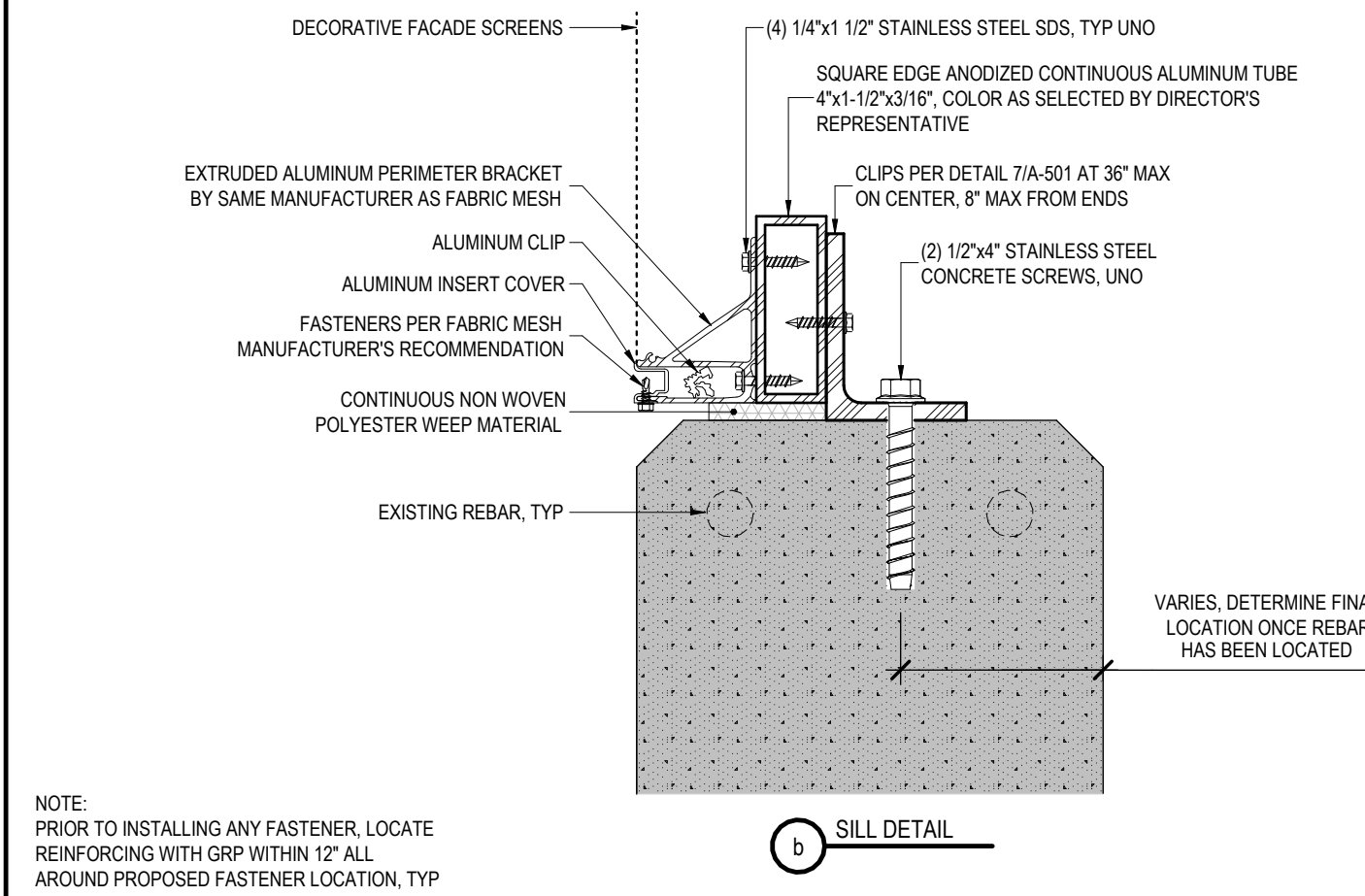


b SILL DETAIL

6 SNOW SHIELD DETAIL (OPENING WITH CONCRETE SILL)
REF: 4/A-301 SCALE: 3" = 1'-0"

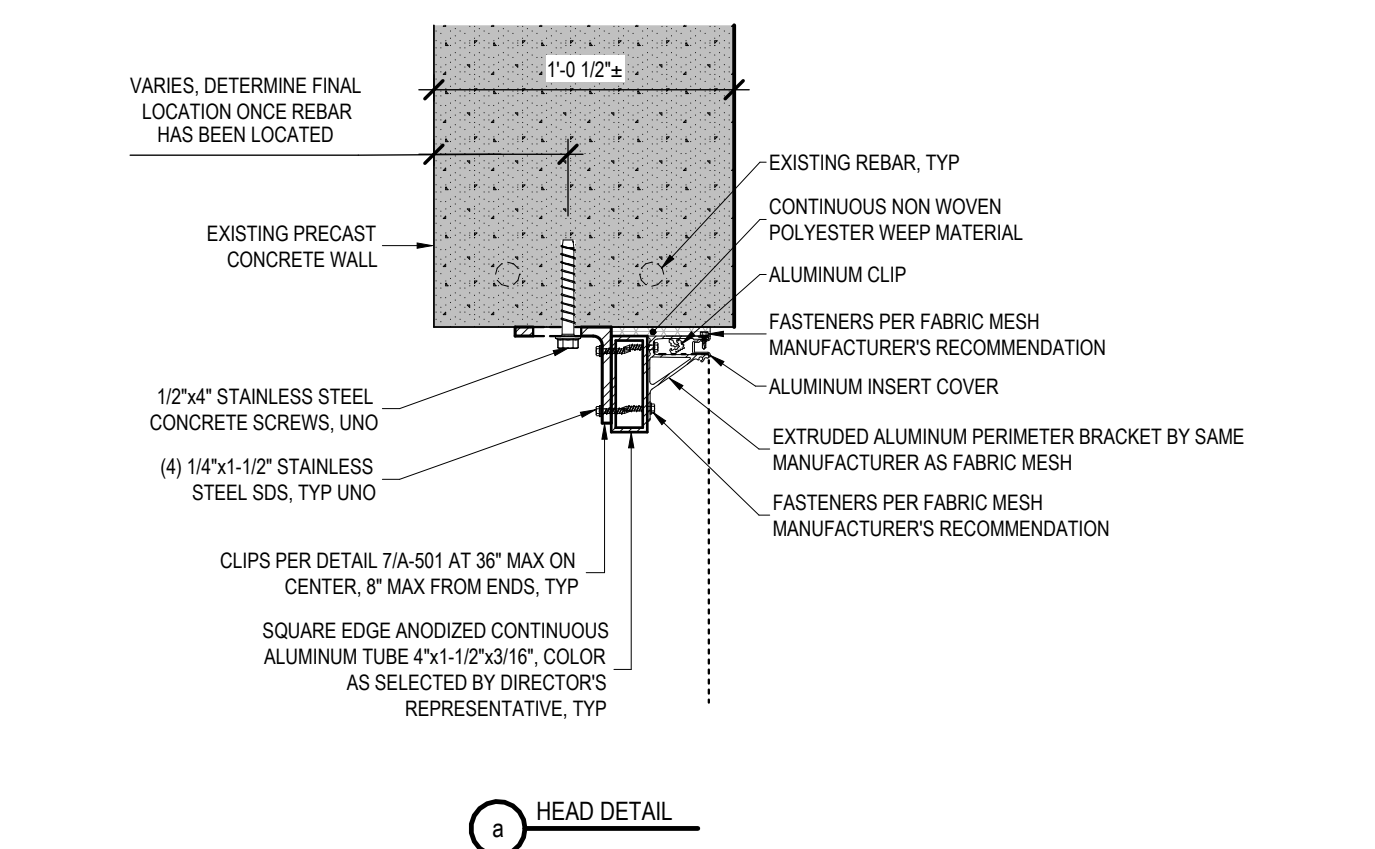


a HEAD DETAIL

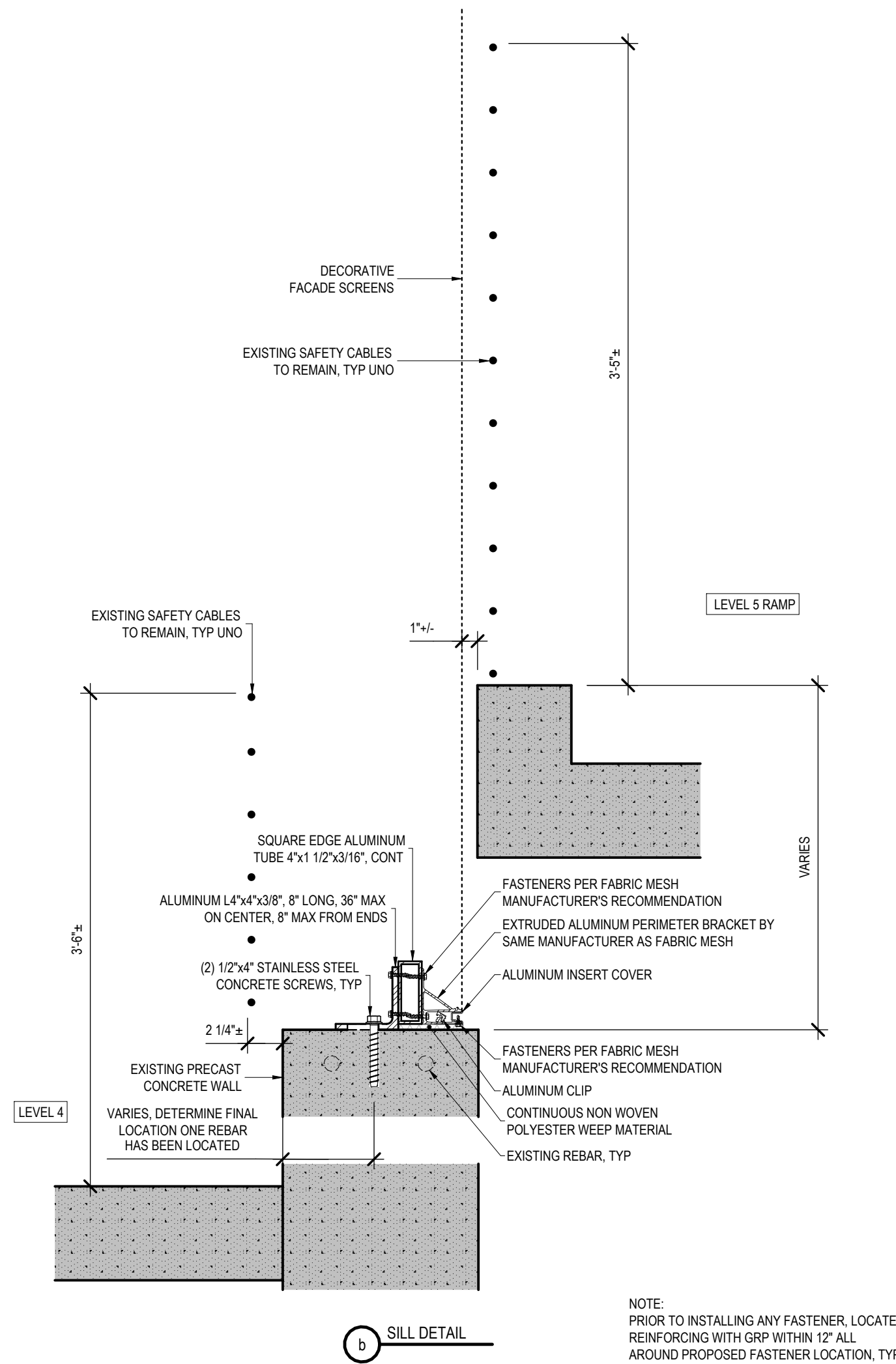


b SILL DETAIL

3 SNOW SHIELD DETAIL (OPENINGS W/O CONCRETE SILL)
REF: 1/A-104 SCALE: 3" = 1'-0"



a HEAD DETAIL

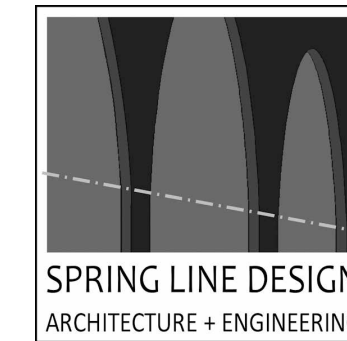


b SILL DETAIL

4 INDOOR OPENING SNOW SHIELD DETAIL
REF: 1/A-104 SCALE: 1 1/2" = 1'-0"

CONSULTANT

CERTIFICATE OF AUTHORIZATION No.: 0022677

**ENERGY CODE COMPLIANCE STATEMENT:**

TO THE BEST OF THE REGISTERED DESIGN PROFESSIONAL'S KNOWLEDGE, BELIEF AND PROFESSIONAL JUDGEMENT, THESE PLANS AND/OR SPECIFICATIONS ARE IN COMPLIANCE WITH THE 2020 ENERGY CODE OF NEW YORK STATE.

UNIFORM CODE COMPLIANCE STATEMENT:

TO THE BEST OF THE REGISTERED DESIGN PROFESSIONAL'S KNOWLEDGE, BELIEF AND PROFESSIONAL JUDGEMENT, THESE PLANS AND/OR SPECIFICATIONS ARE IN COMPLIANCE WITH THE 2020 UNIFORM CODE OF NEW YORK STATE.

WARNING:

THE ALTERATION OF THIS MATERIAL IN ANY WAY, UNLESS DONE UNDER THE DIRECTION OF A COMPARABLE PROFESSIONAL, I.E. ARCHITECT FOR AN ARCHITECT, ENGINEER FOR AN ENGINEER OR LANDSCAPE ARCHITECT FOR A LANDSCAPE ARCHITECT, IS A VIOLATION OF THE NEW YORK STATE EDUCATION LAW AND/OR REGULATIONS AND IS A CLASS 'A' MISDEMEANOR.



CONTRACT:

CONSTRUCTION

TITLE:

PROVIDE SNOW SHIELD FEATURES

LOCATION:

EMPIRE STATE PLAZA
EAST PARKING GARAGE
PHILIP STREET
ALBANY, NY

CLIENT:

OFFICE OF GENERAL SERVICES

REVISED DRAWING 2025-07-01

MARK	DATE	DESCRIPTION
	2025-07-01	ADDENDUM 3
	2025-04-22	BID DOCUMENT

PROJECT NUMBER: **47725 - C**

DESIGNED BY: KK

DRAWN BY: LK

FIELD CHECK:

APPROVED:

SHEET TITLE:

SNOW SHIELD DETAILS

DRAWING NUMBER:

A-501

SHEET 18 OF 21

TO THE BEST OF THE REGISTERED DESIGN PROFESSIONAL'S
KNOWLEDGE, BELIEF AND PROFESSIONAL JUDGEMENT,
THESE PLANS AND/OR SPECIFICATIONS ARE IN COMPLIANCE
WITH THE 2020 ENERGY CODE OF NEW YORK STATE.

TO THE BEST OF THE REGISTERED DESIGN PROFESSIONAL'S
KNOWLEDGE, BELIEF AND PROFESSIONAL JUDGEMENT,
THESE PLANS AND/OR SPECIFICATIONS ARE IN COMPLIANCE
WITH THE 2020 UNIFORM CODE OF NEW YORK STATE.

THE ALTERATION OF THIS MATERIAL IN ANY WAY, UNLESS DONE UNDER THE DIRECTION OF A COMPARABLE PROFESSIONAL, I.E. ARCHITECT FOR AN ARCHITECT, ENGINEER FOR AN ENGINEER OR LANDSCAPE ARCHITECT FOR A LANDSCAPE ARCHITECT, IS A VIOLATION OF THE NEW YORK STATE EDUCATION LAW AND/OR REGULATIONS AND IS A CLASS 'A' MISDEMEANOR.



PROVIDE SNOW SHIELD FEATURES

LOCATION: EMPIRE STATE PLAZA
EAST PARKING GARAGE
PHILIP STREET
ALBANY, NY

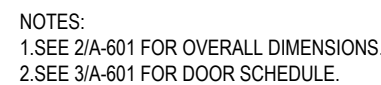
CLIENT: OFFICE OF GENERAL SERVICES

[illegible]

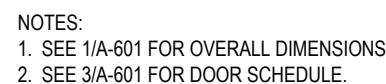
STOREFRONT AND CURTAIN WALL DETAILS

A-502

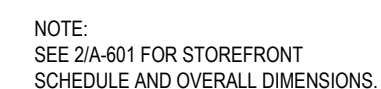
SHEET 19 OF 21



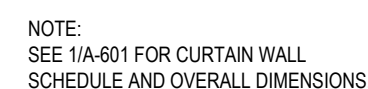
REF: 5 / A-401 SCALE: 3" = 1'-0"



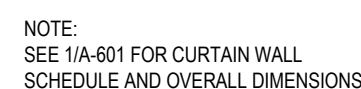
REF: 3 / A-403 SCALE: 3" = 1'-0"



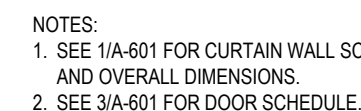
REF: 1 / A-302 SCALE: 3" = 1'-0"



REF: 3 / A-302	SCALE: 3" = 1'-0"
----------------	-------------------

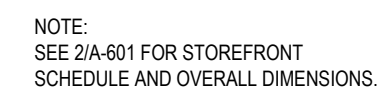


REF: 2 / A-302	SCALE: 3" = 1'-0"
----------------	-------------------

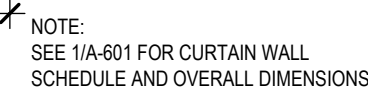


REF: 3 / A-403

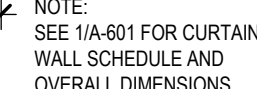
SCALE: 3" = 1'-0"



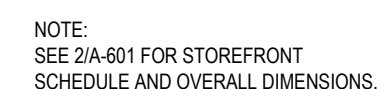
REF: 1 / A-302 SCALE: 3" = 1'-0"



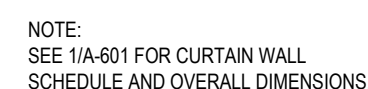
REF: 4 / A-403 SCALE: 3" = 1'-0"



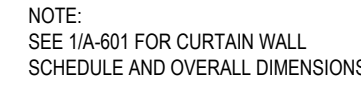
REF: 2 / A-302 SCALE: 3" = 1'-0"



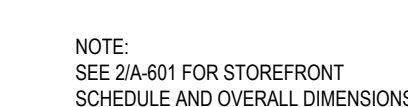
REF: 1 / A-302 SCALE: 3" = 1'-0"



REF: SCALE: 3" = 1'-0"

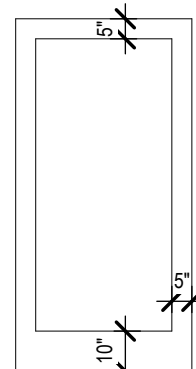


REF: 2 / A-302 SCALE: 3" = 1'-0"

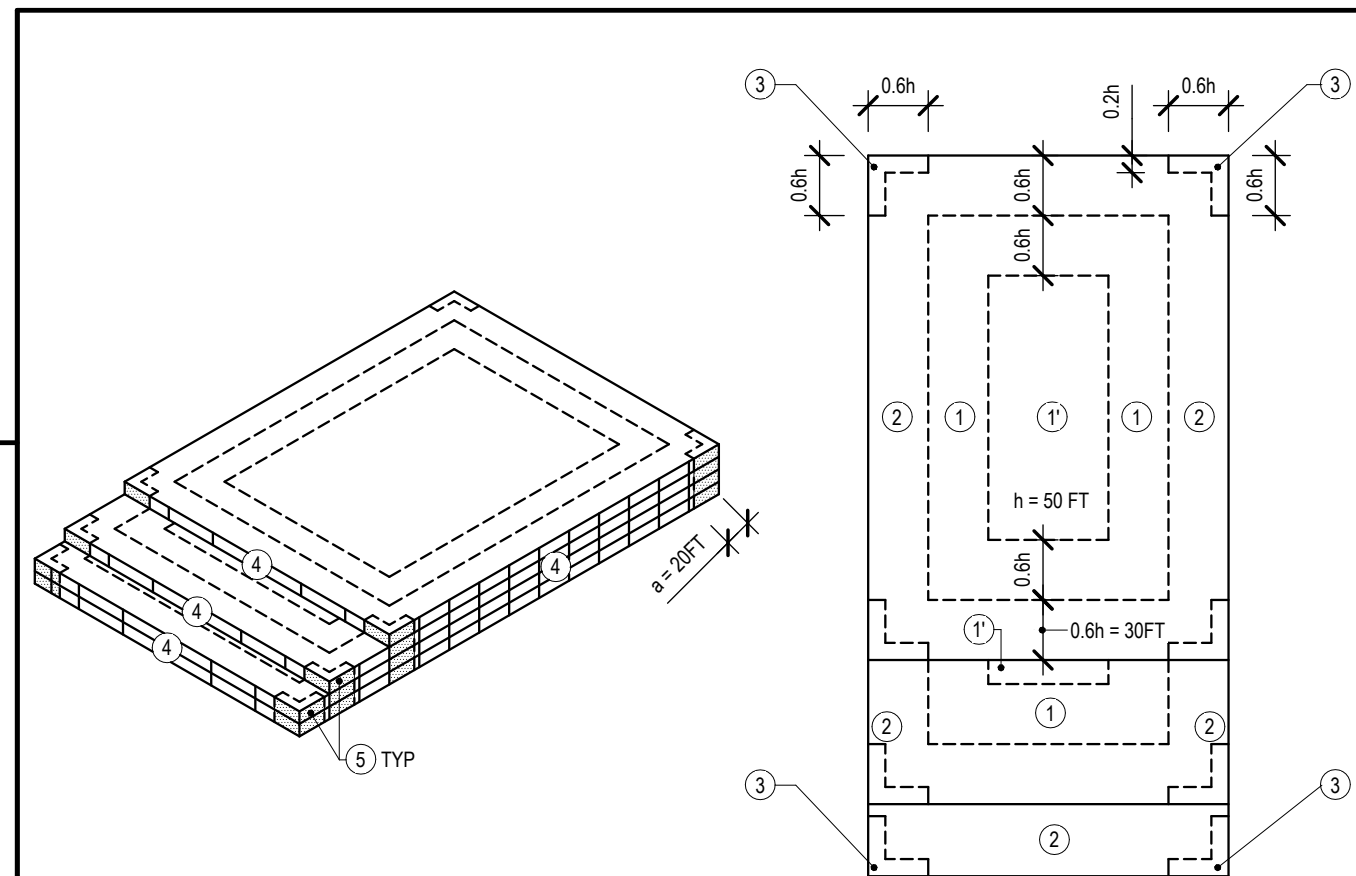


REF: 5 / A-401 SCALE: 3" = 1'-0"

#	DOOR SCHEDULE									
DOOR No.	DOOR PANEL				GLAZING	DETAILS		FIRE	NOTES	
	SIZE	TYPE	MATERIAL	FINISH	TYPE	HEAD	JAMB	RATING		
101	3'-8"W x 7'-0"H x 1 3/4" T	A			I	4/A-502	12/A-502	-	SEE 2/A-601 FOR FRAME	
102	3'-8"W x 7'-4"H x 1 3/4" T	A			I	8/A-502	13/A-502	-	SEE 1/A-601 FOR FRAME	



3 DOOR SCHEDULE AND TYPES
REF: 8 / A-502
SCALE: 1/4" = 1'-0"



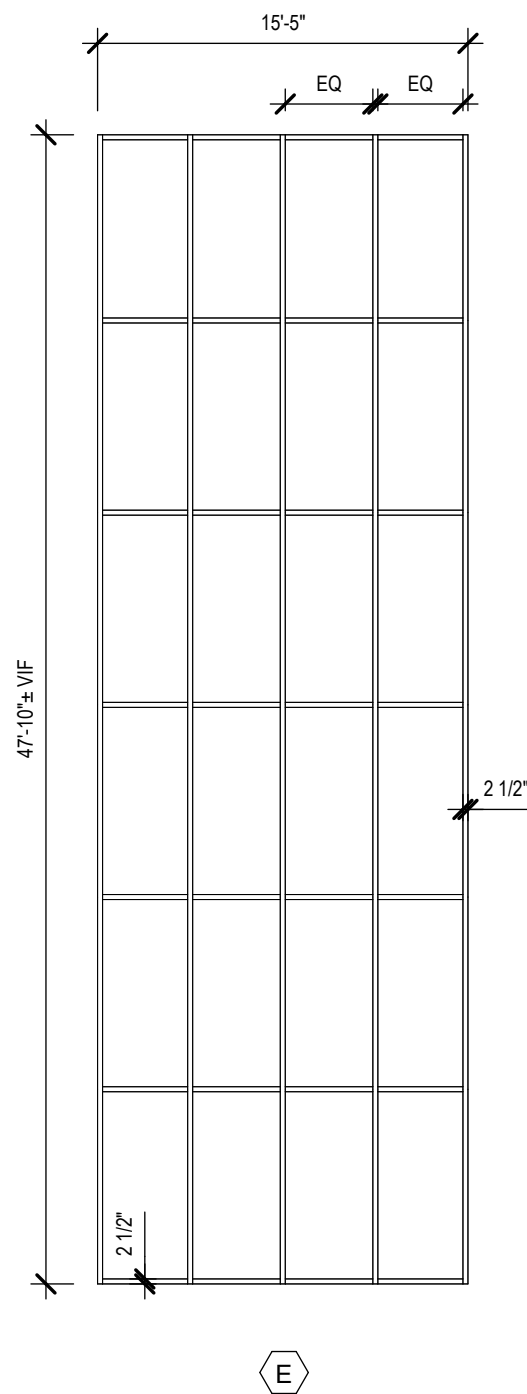
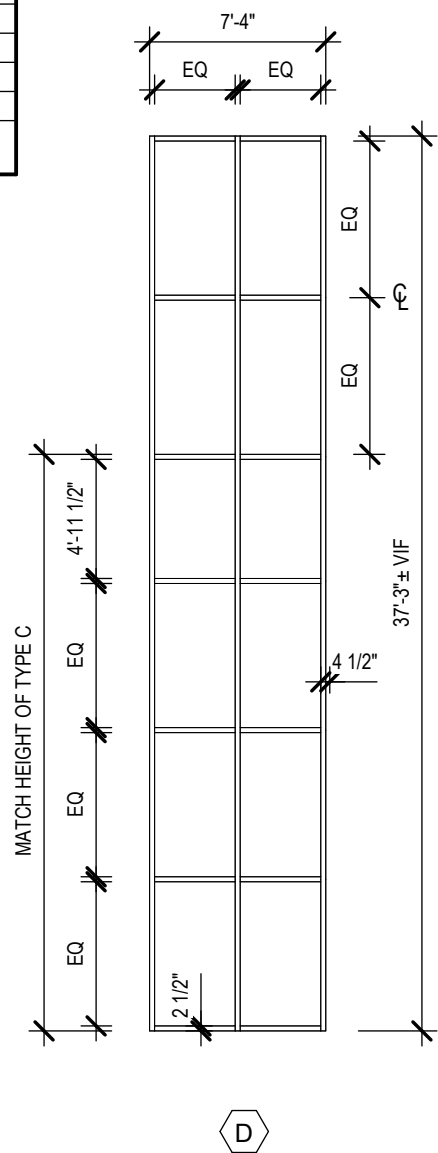
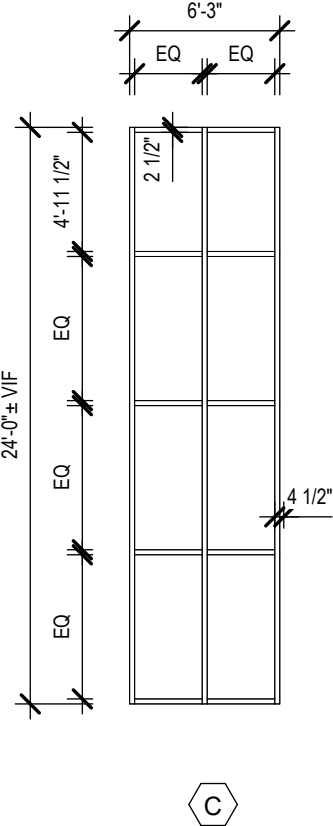
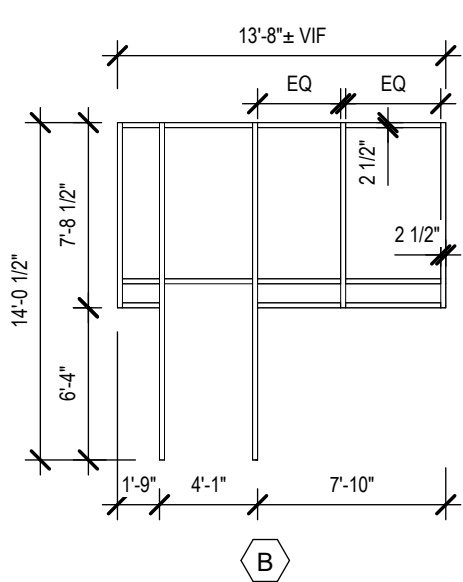
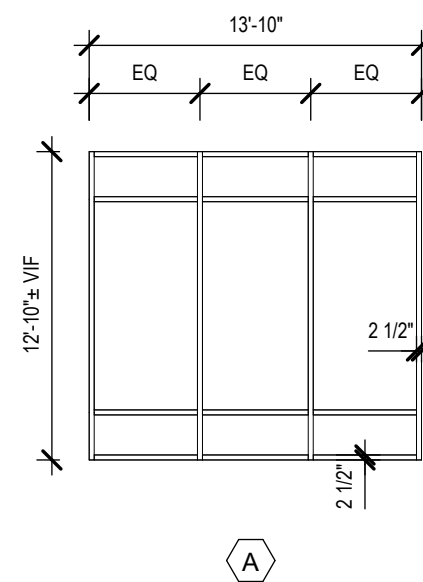
COMPONENTS AND CLADDING WIND PRESSURES (ASCE 7-16)

ZONE	DISTANCE "s" = 20 FT		DISTANCE "0.6 h" = 30 FT		EFFECTIVE WIND AREA = 10 SF	
	LRFD WIND PRESSURE				ASD WIND PRESSURE	
1	-48 PSF				-29 PSF	
1'	-31 PSF				-19 PSF	
2	-61 PSF				-36 PSF	
3	-80 PSF				-48 PSF	
4	+31 PSF / -33 PSF				+19 PSF / -20 PSF	
5	+31 PSF / -39 PSF				+19 PSF / -23 PSF	

4 WIND LOAD CALCULATIONS
REF:
SCALE: NTS

CURTAIN WALL SCHEDULE									
###-###-#	AREA (± VIF)	TYPE	DETAILS			GLAZING TYPE	<div><div></div><div>↑</div><div>DOOR 102</div></div>	COMMENTS	
			HEAD	JAMB	SILL				
1E G15-G16 R	131 SF	B	10/A-502	6/A-502	2/A-502	I		DOOR 102 INSERTED (SEE 3/A-601). SEE TYPE FOR DIMENSION	
1N A15-B15 R	150 SF	C	10/A-502	6/A-502	2/A-502	I		SEE TYPE FOR DIMENSION	
1N F16-G16 L	178 SF	A	10/A-502	6/A-502	2/A-502	I		SEE TYPE FOR DIMENSION	
1N A15-B15 L	273 SF	D	10/A-502	6/A-502	2/A-502	I		SEE TYPE FOR DIMENSION	
1N F13-G13	737 SF	E	10/A-502	6/A-502	2/A-502	I		SEE TYPE FOR DIMENSION	
TOTAL SCREEN AREA	1469 SF								

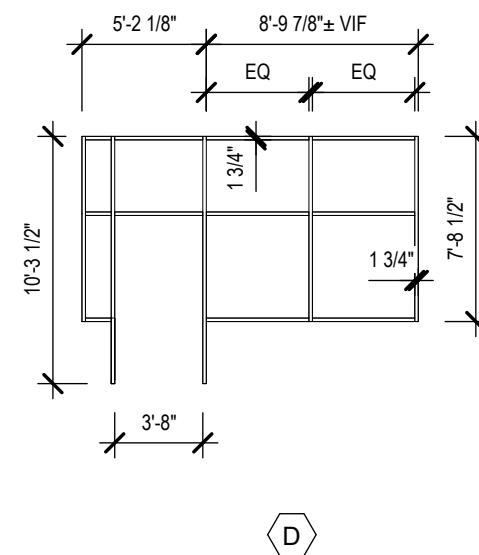
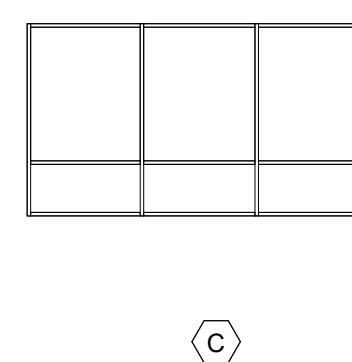
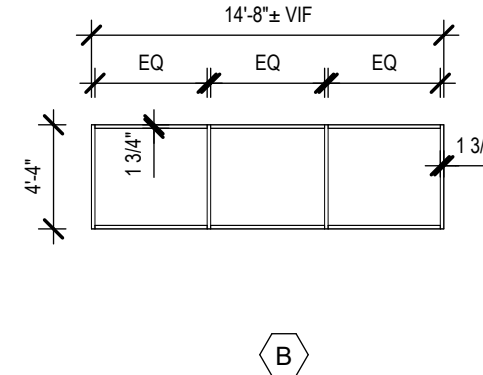
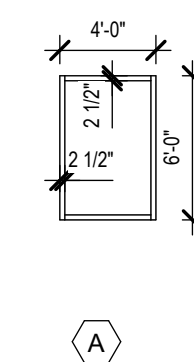
ANCHORAGE OF CURTAINWALL SYSTEMS TO EXISTING CONSTRUCTION TO BE DETERMINED BY DEFERRED DESIGN PREPARED BY A NYS LICENSED PE. COORDINATE DETAILS OF ANCHORAGE WITH APPROVED MANUFACTURER'S RECOMMENDATIONS AND REQUIREMENTS. DESIGN SHALL UTILIZE THE MINIMUM COMPONENTS AND CLADDING WIND PRESSURES GIVEN ON THIS SHEET. SUBMIT A COMPLETE CALCULATION DESIGN PACKAGE FOR ANCHORAGE AS PART OF THE CURTAINWALL SHOP DRAWING SUBMISSION.



1 CURTAIN WALL SCHEDULE AND TYPES
REF: 2 / A-302
SCALE: 1/8" = 1'-0"

STOREFRONT SCHEDULE									
###-###-#	TYPE	AREA (± VIF)	LENGTH (± VIF)	HEIGHT (± VIF)	DETAILS			GLAZING TYPE	COMMENTS
FIRST FLOOR									
1 A14-A15 L	A	24 SF	4'-0"	6'-0"	9/A-502	5/A-502	1/A-502	I	
1 A14-A15 R	A	24 SF	4'-0"	6'-0"	9/A-502	5/A-502	1/A-502	I	
1E G12-G13 R	D	118 SF	14'-0"	7'-8 1/2"	9/A-502	5/A-502	1/A-502	I	DOOR 101 INSERTED (SEE 3/A-601)
		168 SF							
SECOND FLOOR									
2 A14-A15 L	A	24 SF	4'-0"	6'-0"	9/A-502	5/A-502	1/A-502	I	
2 A14-A16 R	A	24 SF	4'-0"	6'-0"	9/A-502	5/A-502	1/A-502	I	
2E G15-G16 R	C	115 SF	14'-4"	8'-0"	9/A-502	5/A-502	1/A-502	I	
2A F16-G16 L	C	118 SF	14'-6"	8'-2"	9/A-502	5/A-502	1/A-502	I	
2E G12-G13 R	C	120 SF	14'-8"	8'-2"	9/A-502	5/A-502	1/A-502	I	
		401 SF							
THIRD FLOOR									
3 A14-A15 L	A	16 SF	4'-0"	4'-0"	9/A-502	5/A-502	1/A-502	I	
3 A14-A15 R	A	16 SF	4'-0"	4'-0"	9/A-502	5/A-502	1/A-502	I	
3E G12-G13 R	B	90 SF	14'-8"	6'-2"	9/A-502	5/A-502	1/A-502	I	
		122 SF							
FOURTH FLOOR									
4E G12-G13 R	B	64 SF	14'-8"	4'-4"	9/A-502	5/A-502	1/A-502	I	
		64 SF							
TOTAL SCREEN AREA		753 SF							

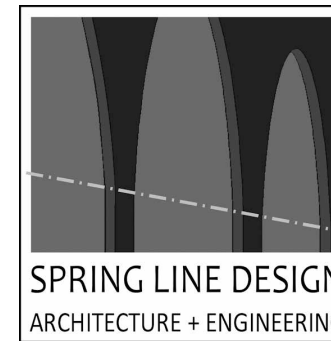
ANCHORAGE OF STOREFRONT SYSTEMS TO EXISTING CONSTRUCTION TO BE DETERMINED BY DEFERRED DESIGN PREPARED BY A NYS LICENSED PE. COORDINATE DETAILS OF ANCHORAGE WITH APPROVED MANUFACTURER'S RECOMMENDATIONS AND REQUIREMENTS. DESIGN SHALL UTILIZE THE MINIMUM COMPONENTS AND CLADDING WIND PRESSURES GIVEN ON THIS SHEET. SUBMIT A COMPLETE CALCULATION DESIGN PACKAGE FOR ANCHORAGE AS PART OF THE STOREFRONT SHOP DRAWING SUBMISSION.



2 STOREFRONT WALL SCHEDULE AND TYPES
REF: 1 / A-302
SCALE: 1/8" = 1'-0"

CONSULTANT

CERTIFICATE OF AUTHORIZATION No.: 0022877



ENERGY CODE COMPLIANCE STATEMENT:

TO THE BEST OF THE REGISTERED DESIGN PROFESSIONAL'S KNOWLEDGE, BELIEF AND PROFESSIONAL JUDGEMENT, THESE PLANS AND/OR SPECIFICATIONS ARE IN COMPLIANCE WITH THE 2020 ENERGY CODE OF NEW YORK STATE.

UNIFORM CODE COMPLIANCE STATEMENT:

TO THE BEST OF THE REGISTERED DESIGN PROFESSIONAL'S KNOWLEDGE, BELIEF AND PROFESSIONAL JUDGEMENT, THESE PLANS AND/OR SPECIFICATIONS ARE IN COMPLIANCE WITH THE 2020 UNIFORM CODE OF NEW YORK STATE.

WARNING:

THE ALTERATION OF THIS MATERIAL IN ANY WAY, UNLESS DONE UNDER THE DIRECTION OF A COMPARABLE PROFESSIONAL, I.E. ARCHITECT FOR AN ARCHITECT, ENGINEER FOR AN ENGINEER OR LANDSCAPE ARCHITECT FOR A LANDSCAPE ARCHITECT, IS A VIOLATION OF THE NEW YORK STATE EDUCATION LAW AND/OR REGULATIONS AND IS A CLASS 'A' MISDEMEANOR.



REGISTRATION EXPIRES: 12/31/2028

CONTRACT:

CONSTRUCTION

TITLE:

PROVIDE SNOW SHIELD FEATURES

LOCATION:

EMPIRE STATE PLAZA
EAST PARKING GARAGE
PHILIP STREET
ALBANY, NY

CLIENT:

OFFICE OF GENERAL SERVICES

REVISED DRAWING 2025-07-01

MARK	DATE	DESCRIPTION
△	2025-07-01	ADDENDUM 3
	2025-04-22	BID DOCUMENT

PROJECT NUMBER: 47725 - C

DESIGNED BY: KK

DRAWN BY: LK

FIELD CHECK:

APPROVED:

SHEET TITLE:

CURTAIN WALL,
STOREFRONT, AND DOOR
SCHEDULE

DRAWING NUMBER:

A-601

SHEET 21 OF 21